

---

Herstellungsnummer	30103-17626	Datum	000215 IK
--------------------	-------------	-------	--------------

---

Plattenwärmeaustauscher	M10-MFHC	Anzahl	1
Zeichnung nr	32200-0713		

---

Kunde	ref.
YY Schenk Filterbau GmbH	
Slavutich	

---

Lieferant	ref.
Alfa Laval GmbH	C911001017-01/8014301101
Tyskland	

---

Werkstatt	ref.
ALFA-LAVAL THERMAL LUND	T300266
	TO nr.300266

---

Platten mit parallelem Strom.

Das Plattenpaket wird auf 900 mm zusammengespannt.

Immer die Platte von der Dichtungsseite her sehen. Auf der oberen Plattenseite ist eine zehnziffrige Teilnummer und ein Buchstabe eingestempelt.

Die Platten werden, von der Gestellplatte her gerechnet, in der unten angegebenen Reihenfolge mit der Dichtungsseite zur Gestellplatte montiert.

---

Abmessungen(siehe Zeichnung) mm	: Nettogewicht
	: 581 kg
A = 900	:
LT= 1650	: Flüssigkeitsinhalt
B = 2160	: 200 l
	:
C = 2370	: Arbeitsdruck
	: 16.0 BAR

---

Anschlüsse  
DIN 100

---

#### Anmerkungen

Prüfdruck : 21,0 BAR  
Design temp : 110 C

Bier : T1->S1  
30.0% Prop.glyco: S4=>T4

Bolts : M30

---

Medien	->Bier	=>30.0% Prop.glycol
Durchflussmenge	40.00 m <sup>3</sup> /h	80.00 m <sup>3</sup> /h
Temp. Programm	5.0 zu -1.0 C	-3.0 zu 0.1 C
Druckabfall	94.83 kPa	65.76 kPa

Flüssigkeitsinhalt	100,0 l	100,0 l
--------------------	---------	---------

Lage der Anschlüsse

Eintritt	T1	S4
Austritt	S1	T4

Material in Anschlüssen

Plattenmaterial	AISI 316
-----------------	----------

Dicke	0.50 mm
-------	---------

Dichtungsmaterial	NBR	CLIP-ON
-------------------	-----	---------

Wärmeaustauschfläche	43,78 m <sup>2</sup>
----------------------	----------------------

Schaltung	4*25 H
	-----
	2*50 H

f e	Platte Plattenkode		Löcher in der Platte				Flussrichtung au der Packungsseit der Platte
	nr.	nr.	oben	unten	unten	oben	
			links	links	rechts	rechts	
			S	1	2	3	4
				<--			=<=
1	367317	0491B		0			0
2	367317	0410A		0		0==<==0	n.u.
3	367317	4403B		0--<---0		0	0
4	367317	4403A		0	0	0	0
5	367317	4403B		0	0	0	0
6	367317	4403A		0	0	0	0
7	367317	4403B		0	0	0	0
8	367317	4403A		0	0	0	0
9	367317	4403B		0	0	0	0
10	367317	4403A		0	0	0	0
11	367317	4403B		0	0	0	0
12	367317	4403A		0	0	0	0
13	367317	4403B		0	0	0	0
14	367317	4403A		0	0	0	0
15	367317	4403B		0	0	0	0
16	367317	4403A		0	0	0	0
17	367317	4403B		0	0	0	0
18	367317	4403A		0	0	0	0
19	367317	4403B		0	0	0	0
20	367317	4403A		0	0	0	0
21	367317	4403B		0	0	0	0
22	367317	4403A		0	0	0	0
23	367317	4403B		0	0	0	0
24	367317	4403A		0	0	0	0
25	367317	4403B		0	0	0	0
26	367317	4403A		0	0	0	0
27	367317	4403B		0	0	0	0
28	367317	4403A		0	0	0	0
29	367317	4403B		0	0	0	0
30	367317	4403A		0	0	0	0
31	367317	4403B		0	0	0	0
32	367317	4403A		0	0	0	0
33	367317	4403B		0	0	0	0
34	367317	4403A		0	0	0	0
35	367317	4403B		0	0	0	0
36	367317	4403A		0	0	0	0
37	367317	4403B		0	0	0	0
38	367317	4403A		0	0	0	0
39	367317	4403B		0	0	0	0
40	367317	4403A		0	0	0	0
41	367317	4403B		0	0	0	0
42	367317	4403A		0	0	0	0
43	367317	4403B		0	0	0	0
44	367317	4403A		0	0	0	0
45	367317	4403B		0	0	0	0
46	367317	4403A		0	0	0	0
47	367317	4403B		0	0	0	0
48	367317	4403A		0	0	0	0
49	367317	4403B		0	0	0	0
50	367317	4403A		0	0	0	0
51	367317	0409B		---<---0		0	0
52	367317	0405A			0	0	0

Ed. 1

53	367317	4403B	0--->--0	0	0	n.u.
54	367317	4403A	0	0	0	n.u.
55	367317	4403B	0	0	0	n.u.
56	367317	4403A	0	0	0	n.u.
57	367317	4403B	0	0	0	n.u.
58	367317	4403A	0	0	0	n.u.
59	367317	4403B	0	0	0	n.u.
60	367317	4403A	0	0	0	n.u.
61	367317	4403B	0	0	0	n.u.
62	367317	4403A	0	0	0	n.u.
63	367317	4403B	0	0	0	n.u.
64	367317	4403A	0	0	0	n.u.
65	367317	4403B	0	0	0	n.u.
66	367317	4403A	0	0	0	n.u.
67	367317	4403B	0	0	0	n.u.
68	367317	4403A	0	0	0	n.u.
69	367317	4403B	0	0	0	n.u.
70	367317	4403A	0	0	0	n.u.
71	367317	4403B	0	0	0	n.u.
72	367317	4403A	0	0	0	n.u.
73	367317	4403B	0	0	0	n.u.
74	367317	4403A	0	0	0	n.u.
75	367317	4403B	0	0	0	n.u.
76	367317	4403A	0	0	0	n.u.
77	367317	4403B	0	0	0	n.u.
78	367317	4403A	0	0	0	n.u.
79	367317	4403B	0	0	0	n.u.
80	367317	4403A	0	0	0	n.u.
81	367317	4403B	0	0	0	n.u.
82	367317	4403A	0	0	0	n.u.
83	367317	4403B	0	0	0	n.u.
84	367317	4403A	0	0	0	n.u.
85	367317	4403B	0	0	0	n.u.
86	367317	4403A	0	0	0	n.u.
87	367317	4403B	0	0	0	n.u.
88	367317	4403A	0	0	0	n.u.
89	367317	4403B	0	0	0	n.u.
90	367317	4403A	0	0	0	n.u.
91	367317	4403B	0	0	0	n.u.
92	367317	4403A	0	0	0	n.u.
93	367317	4403B	0	0	0	n.u.
94	367317	4403A	0	0	0	n.u.
95	367317	4403B	0	0	0	n.u.
96	367317	4403A	0	0	0	n.u.
97	367317	4403B	0	0	0	n.u.
98	367317	4403A	0	0	0	n.u.
99	367317	4403B	0	0	0	n.u.
100	367317	0406A	0	0	0==<===	n.u.
101	367317	0414B	0--->---	0		n.u.
102	367317	0410A	0		0===>==0	n.o.
103	367317	4403B	0--<---0	0	0	n.o.
104	367317	4403A	0	0	0	n.o.
105	367317	4403B	0	0	0	n.o.
106	367317	4403A	0	0	0	n.o.
107	367317	4403B	0	0	0	n.o.
108	367317	4403A	0	0	0	n.o.
109	367317	4403B	0	0	0	n.o.
110	367317	4403A	0	0	0	n.o.
111	367317	4403B	0	0	0	n.o.
112	367317	4403A	0	0	0	n.o.

Ed. 1

113	367317	4403B	0	0	0	0	n.o.
114	367317	4403A	0	0	0	0	n.o.
115	367317	4403B	0	0	0	0	n.o.
116	367317	4403A	0	0	0	0	n.o.
117	367317	4403B	0	0	0	0	n.o.
118	367317	4403A	0	0	0	0	n.o.
119	367317	4403B	0	0	0	0	n.o.
120	367317	4403A	0	0	0	0	n.o.
121	367317	4403B	0	0	0	0	n.o.
122	367317	4403A	0	0	0	0	n.o.
123	367317	4403B	0	0	0	0	n.o.
124	367317	4403A	0	0	0	0	n.o.
125	367317	4403B	0	0	0	0	n.o.
126	367317	4403A	0	0	0	0	n.o.
127	367317	4403B	0	0	0	0	n.o.
128	367317	4403A	0	0	0	0	n.o.
129	367317	4403B	0	0	0	0	n.o.
130	367317	4403A	0	0	0	0	n.o.
131	367317	4403B	0	0	0	0	n.o.
132	367317	4403A	0	0	0	0	n.o.
133	367317	4403B	0	0	0	0	n.o.
134	367317	4403A	0	0	0	0	n.o.
135	367317	4403B	0	0	0	0	n.o.
136	367317	4403A	0	0	0	0	n.o.
137	367317	4403B	0	0	0	0	n.o.
138	367317	4403A	0	0	0	0	n.o.
139	367317	4403B	0	0	0	0	n.o.
140	367317	4403A	0	0	0	0	n.o.
141	367317	4403B	0	0	0	0	n.o.
142	367317	4403A	0	0	0	0	n.o.
143	367317	4403B	0	0	0	0	n.o.
144	367317	4403A	0	0	0	0	n.o.
145	367317	4403B	0	0	0	0	n.o.
146	367317	4403A	0	0	0	0	n.o.
147	367317	4403B	0	0	0	0	n.o.
148	367317	4403A	0	0	0	0	n.o.
149	367317	4403B	0	0	0	0	n.o.
150	367317	4403A	0	0	0	0	n.o.
151	367317	0409B	---	<---	0	0	n.o.
152	367317	0405A			0	0	n.o.
153	367317	4403B	0---	-->	0	0	n.u.
154	367317	4403A	0		0	0	n.o.
155	367317	4403B	0	0	0	0	n.u.
156	367317	4403A	0	0	0	0	n.o.
157	367317	4403B	0	0	0	0	n.u.
158	367317	4403A	0	0	0	0	n.o.
159	367317	4403B	0	0	0	0	n.u.
160	367317	4403A	0	0	0	0	n.o.
161	367317	4403B	0	0	0	0	n.u.
162	367317	4403A	0	0	0	0	n.o.
163	367317	4403B	0	0	0	0	n.u.
164	367317	4403A	0	0	0	0	n.o.
165	367317	4403B	0	0	0	0	n.u.
166	367317	4403A	0	0	0	0	n.o.
167	367317	4403B	0	0	0	0	n.u.
168	367317	4403A	0	0	0	0	n.o.
169	367317	4403B	0	0	0	0	n.u.
170	367317	4403A	0	0	0	0	n.o.
171	367317	4403B	0	0	0	0	n.u.
172	367317	4403A	0	0	0	0	n.o.

Ed. 1

173	367317	4403B	0	0	0	0	n.u.
174	367317	4403A	0	0	0	0	n.o.
175	367317	4403B	0	0	0	0	n.u.
176	367317	4403A	0	0	0	0	n.o.
177	367317	4403B	0	0	0	0	n.u.
178	367317	4403A	0	0	0	0	n.o.
179	367317	4403B	0	0	0	0	n.u.
180	367317	4403A	0	0	0	0	n.o.
181	367317	4403B	0	0	0	0	n.u.
182	367317	4403A	0	0	0	0	n.o.
183	367317	4403B	0	0	0	0	n.u.
184	367317	4403A	0	0	0	0	n.o.
185	367317	4403B	0	0	0	0	n.u.
186	367317	4403A	0	0	0	0	n.o.
187	367317	4403B	0	0	0	0	n.u.
188	367317	4403A	0	0	0	0	n.o.
189	367317	4403B	0	0	0	0	n.u.
190	367317	4403A	0	0	0	0	n.o.
191	367317	4403B	0	0	0	0	n.u.
192	367317	4403A	0	0	0	0	n.o.
193	367317	4403B	0	0	0	0	n.u.
194	367317	4403A	0	0	0	0	n.o.
195	367317	4403B	0	0	0	0	n.u.
196	367317	4403A	0	0	0	0	n.o.
197	367317	4403B	0	0	0	0	n.u.
198	367317	4403A	0	0	0	0	n.o.
199	367317	4403B	0	0	0	0	n.u.
200	367317	0409A	0	0	====>==	0	n.o.
201	367317	0411B	0----	>----		0	n.u.
	367317	0444A	0			0	

	->-				==>
T	1	2	3	4	

DATE : 000215

30103-17626

Ed. 1

Plate-req. for manuf.order: 300266

Orderno. : T300266-01

M10 M

AISI 316

0.50 NBR

CLIP-ON

PLATE NUMBER	QUANTITY
--------------	----------

367317 0405	2
-------------	---

367317 0406	1
-------------	---

367317 0409	3
-------------	---

367317 0410	2
-------------	---

367317 0411	1
-------------	---

367317 0414	1
-------------	---

367317 0444	1
-------------	---

367317 0491	1
-------------	---

367317 4403	190
-------------	-----

TOTAL (CHANNELPL.+ENDPL.)	----- 201
---------------------------	--------------

(TRANSITION PL./DIST. SHEET)	1
------------------------------	---

Herstellungsnummer	MEASUREMENTS 30103-17626	Datum	000215 IK
--------------------	-----------------------------	-------	--------------

Plattenwärmeaustauscher	M10-MFHC	Anzahl	1
Zeichnung nr	32200-0713		

MC - orderno. C911001017-01/8014301101	Orderno. T300266 TO nr.300266
---	-------------------------------------

A-MEAS.TOTAL	900 mm	TOTAL WEIGHT	581 KG
A+FREE SPACE	1284 mm	TOTAL VOLUME	200,0 L
B - MEASURE	2160 mm		
C - MEASURE	2370 mm		
CONN.STD	DIN 100		

		PER SECTION		
SECT.	PLATE AREA	VOLUME IN LTR.		
NO.	m2	SIDE 1 /	SIDE 2	A-MEASURE (mm)
1	43,78	100,0 /	100,0	900

#### CARRYING BARS

CARR.BAR L.	2100 mm	EST. MIN.LENGTH	1654 mm
EXTENDIBLE BY :	PLATE QUANT. /	FREE HANGING	
	70 PCS /	446 mm	

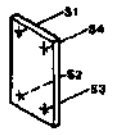
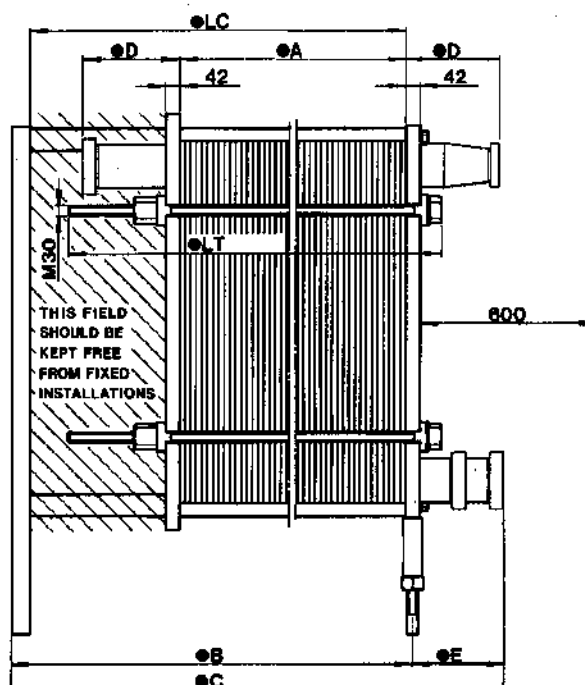
#### TIGHTENING BOLTS

TIGHT.BOLT L.	1650 mm	EST. MIN.LENGTH	1524 mm
TIGHT.BOLT DIM.	M30		
EXTENDIBLE BY :	PLATE QUANT. /	FREE HANGING	
	20 PCS /	126 mm	

CENTRE OF GRAVITY	EMPTY	FILLED (mm)	
HORIZONTAL	612	579	(from the outside of the frame plate)
VERTICAL	715	715	(from the underside foot or frame)

FOUNDATION LOAD	OPENED	OPERATING (N)
SUPP. COLUMN SIDE	3315	2069
FRAME SIDE	4070	5590





PRESSURE PLATE

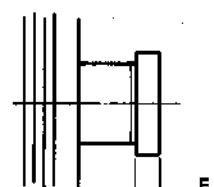
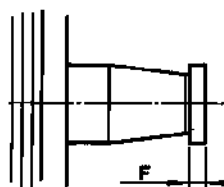
**FRAME PLATE**

LOCATION	MEDIA	CONN.TYPE

ALL DIMENSIONS IN MILLIMETERS

1. Connection of stainless steel  $\phi 101.6$  - 76 with union or clamp.

2. Connection of stainless steel.  
ø101.6 with union or clamp.



STANDARD	Ø101.8-75mm			Ø101.6mm		
	D	E	F	D	E	F
SMS	229	208	24	155	134	35
IDF	226.5	205.5	21.5	141.5	120.5	21.5
DIN	235	214	30	152	131	32
CLAMP	226.5	205.5	21.5	141.5	120.5	21.5

**PREPARED**

**CHECKED**

**APPROVED**

## M10 - MFHC

**Alfa Laval**

T2-E

DATE  
9811

32200-0713

# MANUFACTURING ORDER

SIDA 1

000221

**Order description**

M10-MFHC

**Manuf order No (alfa)**

T300266-4902

**Group**

H2

**Customer Order No**

C911001017-01/8014301101

**Fabrication No from**

30103-17626

**Start date**

000308

**Land**

GERMANY

**Fabrication No to****Finish date**

000315

**Unit type****Qty****Drawing No.****Total op.time****Company No.****Responsible**

M10-MFHC

1

32200-0713

31,66

43317

IK

DESIGN PRESS.....: 0.0 BAR  
TEST PR. SING/DUB: 0.0/0.0 BAR  
MAX DES. TEMP.....: 110 C  
DESIGNCODE.....: TÜV  
M10 FHC CP01.....: T4 T1  
M10 FHC BC01.....: S3 S2 T3 T2  
M10 FHC FI04.....: S4 S1 T4 T1  
M10 FHC CF01.....: S4 S1  
INSPECTION BY.....  
FLUID DANGER CODE: Bier = <undefined>  
: 30.0% Prop.glycol = <undefined>

Pos	Item No	Item description	Quantity	UC	RepQtyPrd
10	M10 MFHC FX01	FIXED ITEMS	1	Pc	0
20	367317 0405	CHANNEL PLATE	2	Pc	0
30	367317 0406	CHANNEL PLATE	1	Pc	0
40	367317 0409	CHANNEL PLATE	3	Pc	0
50	367317 0410	CHANNEL PLATE	2	Pc	0
60	367317 0411	CHANNEL PLATE	1	Pc	0
70	367317 0414	CHANNEL PLATE	1	Pc	0
80	367317 0444	TRANSITION PLATE	1	Pc	0
90	367317 0491	END PLATE 2	1	Pc	0
100	367317 4403	CHANNEL PLATE	190	Pc	0
110	M10 FHC SC01	SUPPORTING COLUMN	1	Pc	0
120	M10 FHC BA05	BARS	1	Pc	0
130	M10 FHC FP01	FRAME PLATE	1	Pc	0
140	M10 FHC PP01	PRESSURE PLATE	1	Pc	0
150	M10 FHC TB02	TIGHTENING BOLT	1	Pc	0
160	M10 FHC NP02	NAME PLATE	1	Pc	0
170	M10 FHC CP01	PIPE	2	Pc	0
180	M10 FHC CF01	PIPE	2	Pc	0
190	M10 FHC BC01	BLIND CONNECTION	4	Pc	0
200	M10 FHC YP53	EMBALLAGE	1	Pc	0
210	M10 FHC FI04	FITTINGS	4	Pc	0
220	ZD45	DOCUMENTS	3	Pc	0
230	ZD42	DOCUMENTS	1	Pc	0
240	ZD01	DOCUMENTS	4	Pc	0
250	ZC02	CERTIFICATES	1	Pc	0

10	MONTAGE	0,00	3,9592
10	SVETSNING	0,00	0,198
20	PACKNINGSMONTAGE	0,00	0,0693
20	HÄLNING AV PLATTOR	0,00	0,0297
20	MONTAGE	0,00	0,0139
30	PACKNINGSMONTAGE	0,00	0,0346
30	HÄLNING AV PLATTOR	0,00	0,0148
30	MONTAGE	0,00	0,0069
40	PACKNINGSMONTAGE	0,00	0,1039
40	HÄLNING AV PLATTOR	0,00	0,0445
40	MONTAGE	0,00	0,0208
50	PACKNINGSMONTAGE	0,00	0,0693
50	HÄLNING AV PLATTOR	0,00	0,0297
50	MONTAGE	0,00	0,0139
60	PACKNINGSMONTAGE	0,00	0,0346
60	HÄLNING AV PLATTOR	0,00	0,0148
60	MONTAGE	0,00	0,0069
70	PACKNINGSMONTAGE	0,00	0,0346
70	HÄLNING AV PLATTOR	0,00	0,0148
70	MONTAGE	0,00	0,0069
80	PACKNINGSMONTAGE	0,00	0,0346
80	HÄLNING AV PLATTOR	0,00	0,0148
80	MONTAGE	0,00	0,0069
90	PACKNINGSMONTAGE	0,00	0,0346
90	HÄLNING AV PLATTOR	0,00	0,0148
90	MONTAGE	0,00	0,0069
100	PACKNINGSMONTAGE	0,00	6,5822
100	HÄLNING AV PLATTOR	0,00	2,8209
100	MONTAGE	0,00	1,3165
130	BLÄSTRING	0,00	0,6038
130	SVETSNING	0,00	5,434
SVETSAS ENL WPS4			
TILLSATSMATERIAL AWS ER316-L			

# MANUFACTURING ORDER

SIDA 2

000221

**Order description**

M10-MFHC

**Customer Order No**

C911001017-01/8014301101

**Manuf order No (alfa)**

T300266-4902

**Fabrication No from**

30103-17626

**Fabrication No to**

**Group**

H2

**Start date**

000308

**Finish date**

000315

**Responsible**

IK

**Land**  
GERMANY

**Unit type**

M10-MFHC

**Qty**

1

**Drawing No.**

32200-0713

**Total op.time**

31,66

**Company No.**

43317

140	BLÄSTRING	0,00	0,6038
140	SVETSNING	0,00	5,434
	SVETSAS ENL WPS4		
	TILLSATSMATERIAL AWS ER316-L		
170	SVETSNING	0,00	1,5837
	SVETSAS ENL WPS4		
	TILLSATSMATERIAL AWS ER316-L		
180	SVETSNING	0,00	1,5837
	SVETSAS ENL WPS4		
	TILLSATSMATERIAL AWS ER316-L		
200	EMBALLERING	0,00	0,8611

Pos	Item no required	Item description	Specification	PONo/MONo	PlanQty	UC	PickQty
160	1629005 01	TYPE PLATE GERMAN	GERMAN TEXT		1	Pc	0
10	1629999 09	MOUNTING DETAILS			1	Pc	0
150	1995 101 092	PLASTIC TUBE	34/32, LDPE, GREY		4	M	0
210	31318 0034 1	NIPPLE	NIPPEL*CLIP 10* DIN NW100		4	Pc	0
10	32220 3101 5	SPANNER	M30 1 1/8"		1	Pc	0
130	32234 4856 2	CLADDING SHEET	KLPL M10-FHC NYCKELHÅL		4	Pc	0
140	32234 4856 2	CLADDING SHEET	KLPL M10-FHC NYCKELHÅL		4	Pc	0
150	32234 4897 1	LOCK WASHER	M30		4	Pc	0
150	32239 1145 1	WEARING WASHER	SLITBRICKA AM10		4	Pc	0
170	32265 4008 1	PIPE	ANSL RÖR101.6 C10/H10		2	Pc	0
180	32265 4008 1	PIPE	ANSL RÖR101.6 C10/H10		2	Pc	0
130	32320 4403 1	FRAME PLATE	STPL ÄMNE M10-FHC RST 37-2 MAT		1	Pc	0
130	32320 4404 1	CLADDING SHEET	STPL KLPL M10-FMC		1	Pc	0
130	32320 4405 1	CLADDING SHEET	STPL KLPL M10-FMC		1	Pc	0
130	32320 4409 1	TUBE	STPL RÖR BEN M10-FMC		2	Pc	0
140	32320 8707 1	PRESSURE PLATE	TRPL ÄMNE M10-FH RST 37-2 MAT.		1	Pc	0
140	32320 8711 1	CLADDING SHEET	TRPL KLPL M10-FMC		1	Pc	0
140	32320 8712 1	CLADDING SHEET	TRPL KLPL M10-FMC		1	Pc	0
140	32320 8713 1	TUBE	TRPL RÖR M10-FHC		1	Pc	0
140	32320 8725 1	CLADDING SHEET	TRPL KLPL M10-FHC		1	Pc	0
110	32322 0032 1	SUPPORTING COLUMN	M10		1	Pc	0
130	32323 0175 1	LEVELLING SCREW	M30, L=165		2	Pc	0
120	32323 2008 5	CARRYING BAR	L=2100		2	Pc	0
150	32324 1107 5	TIGHTENING BOLT	L=1650	6420	4	Pc	0
130	32324 2020 1	NUT	M30, 2317		2	Pc	0
150	32324 2024 3	NUT	M30, W.NR 2.0360 F34 3.1B		4	Pc	0
150	32324 2900 2	GUIDE WASHER			4	Pc	0
80	32324 7367 1	M10-316-0,8	DISTANCE RING	6419	2	Pc	0
190	32324 7805 1	BLIND CONNECTION	M10		4	Pc	0
130	32326 0610 1	CONNECTION LABEL	S1, S2, S3, S4		1	Pc	0

# MANUFACTURING ORDER

SIDA 3

000221

**Order description**

M10-MFHC

**Customer Order No**

C911001017-01/8014301101

**Manuf order No (alfa)**

T300266-4902

**Fabrication No from**

30103-17626

**Fabrication No to**

**Group**

H2

**Start date**

000308

**Finish date**

000315

**Responsible**

IK

**Land**

GERMANY

**Unit type**

M10-MFHC

**Qty**

1

**Drawing No.**

32200-0713

**Total op.time**

31,66

**Company No.**

43317

140	32326 0610 2	CONNECTION LABEL	T1, T2, T3, T4		1	Pc	0
20	32330 1509 6	M10M-CO-NBR	FIELD GASKET SMALL	6419	2	Pc	0
30	32330 1509 6	M10M-CO-NBR	FIELD GASKET SMALL	6419	1	Pc	0
40	32330 1509 6	M10M-CO-NBR	FIELD GASKET SMALL	6419	3	Pc	0
50	32330 1509 6	M10M-CO-NBR	FIELD GASKET SMALL	6419	2	Pc	0
60	32330 1509 6	M10M-CO-NBR	FIELD GASKET SMALL	6419	1	Pc	0
70	32330 1509 6	M10M-CO-NBR	FIELD GASKET SMALL	6419	1	Pc	0
80	32330 1509 6	M10M-CO-NBR	FIELD GASKET SMALL	6419	2	Pc	0
90	32330 1509 6	M10M-CO-NBR	FIELD GASKET SMALL	6419	2	Pc	0
100	32330 1509 6	M10M-CO-NBR	FIELD GASKET SMALL	6419	190	Pc	0
80	32330 6499 6	M10M-NBR	RING GASKET	6419	2	Pc	0
200	32900208 03	PACKING M10 FHC	RYGG L=1250	6418	1	Pc	0
20	367317 0000	RAW PLATE	M10M2-316-0.6-*	6419	2	Pc	0
30	367317 0000	RAW PLATE	M10M2-316-0.6-*	6419	1	Pc	0
40	367317 0000	RAW PLATE	M10M2-316-0.6-*	6419	3	Pc	0
50	367317 0000	RAW PLATE	M10M2-316-0.6-*	6419	2	Pc	0
60	367317 0000	RAW PLATE	M10M2-316-0.6-*	6419	1	Pc	0
70	367317 0000	RAW PLATE	M10M2-316-0.6-*	6419	1	Pc	0
90	367317 0000	RAW PLATE	M10M2-316-0.6-*	6419	1	Pc	0
80	367317 0097	RAW PLATE	M10M2-316-0.6-*	6419	1	Pc	0
100	367317 4098	RAW PLATE	M10M2-316-0.5-*	6419	190	Pc	0
160	956264 12	NAME PLATE	ALFA-LAVAL, PLASTIC		2	Pc	0
190	990138 01	SEAL PLUG	B 1015		4	Pc	0